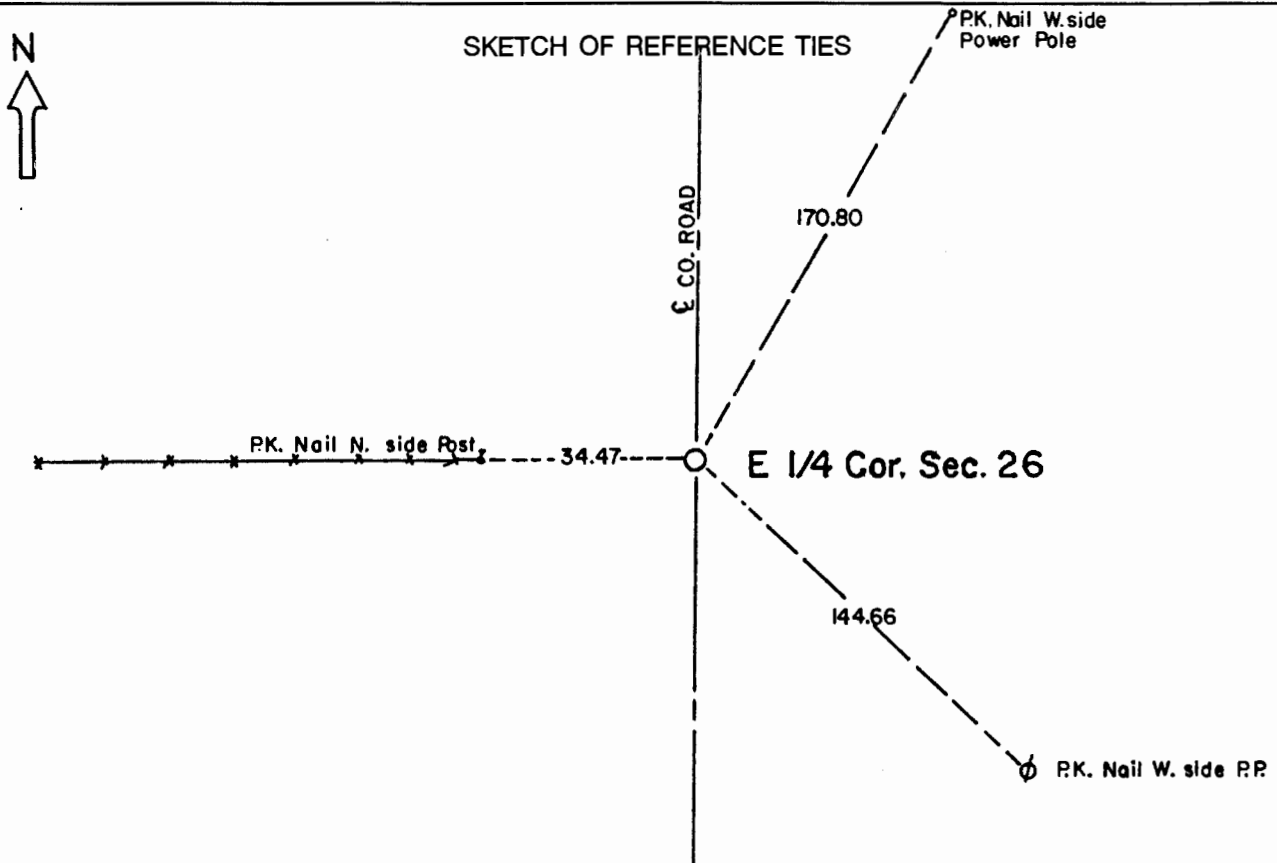


CERTIFICATE OF LOCATION OF GOVERNMENT CORNER

East Quarter Corner of Section **26** , Township **108** , Range **41** 5th P.M.
STATE OF MINNESOTA, County of Murray.

Statement: July 13, 1989 - Found an 8 inch diameter x 12 inch long cylindrical concrete monument and a wooden stake with 8 field stones around it. Placed a Minnesota Department of Cast Iron Monument at the road surface.



Statement of evidence relative to this corner location is on the back of page.

I hereby certify that this document and the data contained herein was prepared by me or under my direct supervision and that I am a duly Registered Land Surveyor under the laws of the State of Minnesota.

Duane A. Bonnema Nov 6, 1989
Duane A. Bonnema Date

Minnesota Registration No. 14895

OFFICE OF THE COUNTY RECORDER
COUNTY OF MURRAY NOV 15 1989

I hereby certify that this document was filed in the County Recorder's office at ____ M. on the ____ day of _____ A.D., 19 ____

County Recorder *James V. Johnson*

By _____, Deputy

DOCUMENT NO. _____

East Quarter Cor. Sec. 26 T108N-R41W

Statement:

September 1861 Original Government Land Office Surveyor L. G. M. Fletcher records in his field notes, "Built mound with trench pits, charred stake per instructions."

April 25, 1905 J. W. Woolstencroft, County Surveyor, records in the County Surveyor's Record Book, page 188, "Government stake." He also shows that he measured to the Corner.

1938+
The Murray County Highway Engineer's Office records in their Section Corner record book "Concrete stone" and then they list witness ties to two fence posts.

Sept. 15, 1913 J. W. Woolstencroft, County Surveyor, records in the County Surveyor's Record Book, page 234, "Stone established by previous survey," while he was doing survey work in Section 25.

July 13, 1989 Duane A. Bonnema, LS Reg. No. 14895, found an 8 inch diameter x 12 inch long cylindrical concrete monument at a depth of 2 feet below the road. At a depth of 3 feet a wooden stake was found with 8 field stones around it. We lowered these monuments and placed a Minnesota Department of Transportation Cast Iron Monument 10 inches below the road surface. The concrete monument position agrees with the former Woolstencroft surveys. The wooden stake found at the 3 foot depth is believed to be the original placed in 1861.